

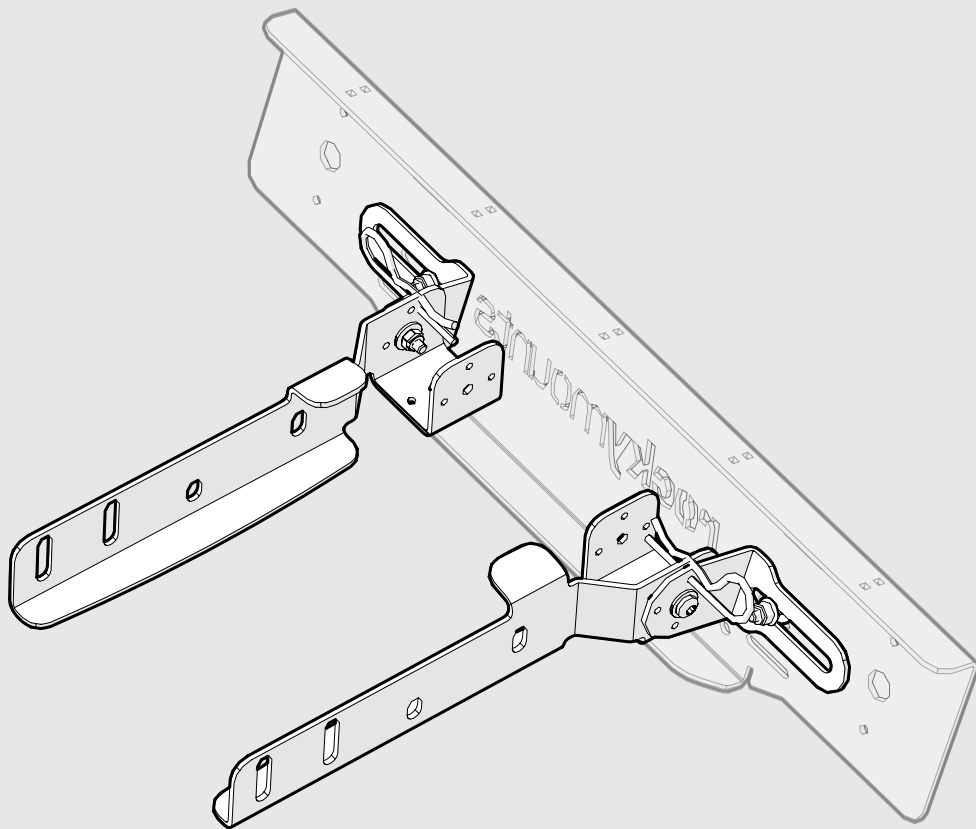


rockymounts[™]

NUMBER PLATE HOLDER BRACKET KIT

15413

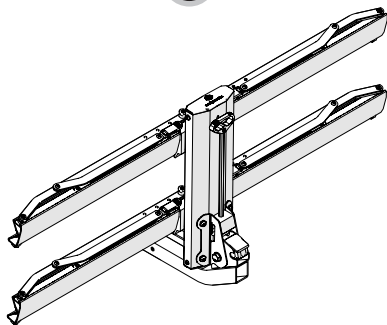
This kit can be configured differently to fit a range of Hitch Racks, including GUIDERAIL, HIGHNOON, MONORAIL, and GIGAWATT.



COMPATIBILITY TABLE

IDENTIFY YOUR BIKE RACK AND FOLLOW THE LISTED STEPS TO COMPLETE THE FIT.
NOTE THAT THIS BRACKET IS CONFIGURED DIFFERENTLY DEPENDING ON THE BIKE RACK.

P1

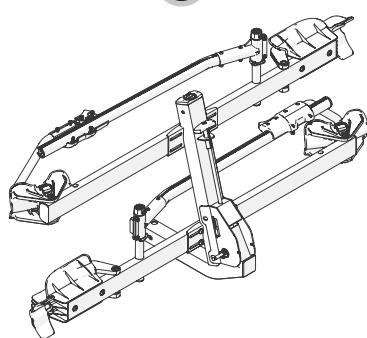


GUIDERAIL:

Steps **1** - **7** & **22** - **23**.

51200.

P2



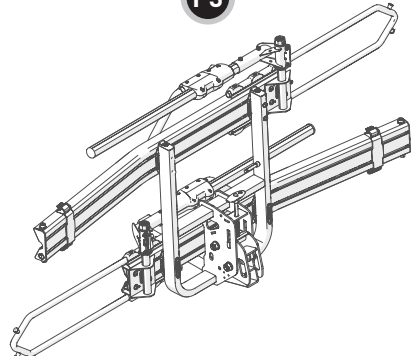
HIGHNOON / MONORAIL:

Steps **8** - **14** & **22** - **23**.

51300 / 50430.

NOTE: Example depicts HIGHNOON, but steps also apply for MONORAIL.

P3



GIGAWATT:

Steps **15** - **23**.

51400

Technical Support:

Please call use at (+61) 2 8846 1900 or email at ride@rockymounts.com for questions regarding use, assembly, and support.

Limited Lifetime Warranty:

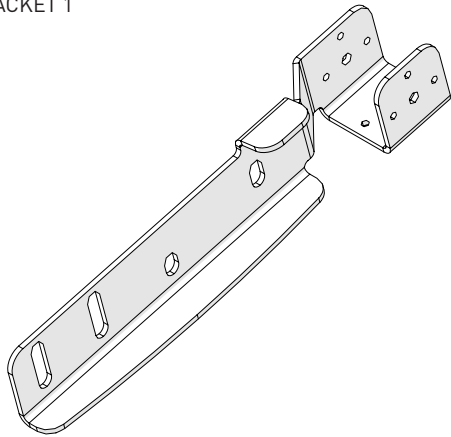
At RockyMounts we offer a Limited Lifetime Warranty for products purchased after January 1, 2014 to the original owner. For details of warranty, how to make a claim, and how to register your product; please see www.rockymounts.com/warranty

CONTENTS

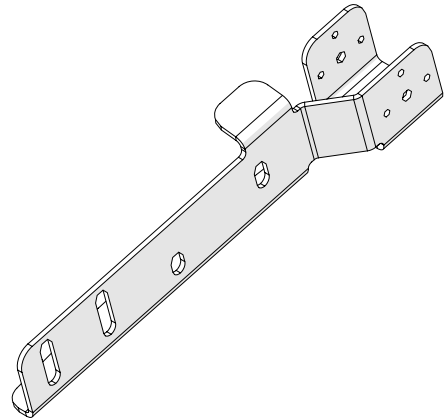
- 3** COMPONENTS LIST
- 4** GUIDERAIL
- 7** HIGHNOON / MONORAIL
- 11** GIGAWATT
- 15** OPERATION

Parts List

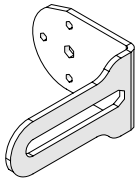
BASE BRACKET 1

**A** x1

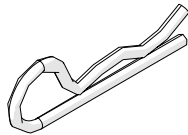
BASE BRACKET 2

**B** x1

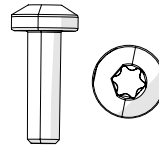
ADJUSTABLE BRACKET

**C** x2

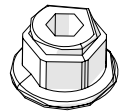
R-CLIP

**D** x2

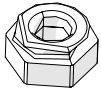
M6 X 20 TORX SCEW

**E** x4

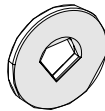
M6 Flange Nyloc Nut

**F** x2

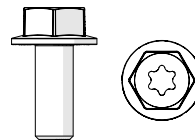
M6 Nyloc Nut

**G** x2

M6 x 16 Washer

**H** x6

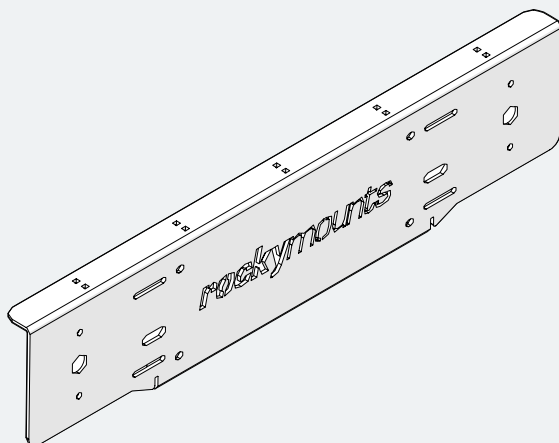
M8 x 20 HEX FANGED SCEW

**I** x4

T30 Torx Key

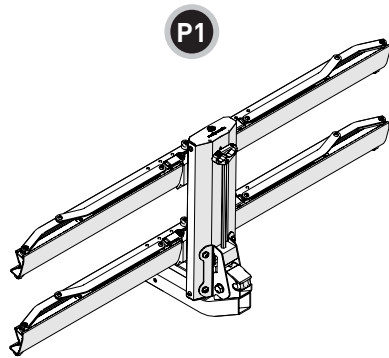
**J** x1

TOOLS REQUIRED:

T1 - 10mm Spanner (3/8")**T2** - 4mm Allen Key (Sold with Hitch Rack)**T3** - Torque Wrench**Plate** - Item sold separatelyNOTE: This item is required to complete the fit.

IMPORTANT: Please refer to page. 2 to identify the correct hitch rack. The bracket is configured differently depending on your hitch rack.

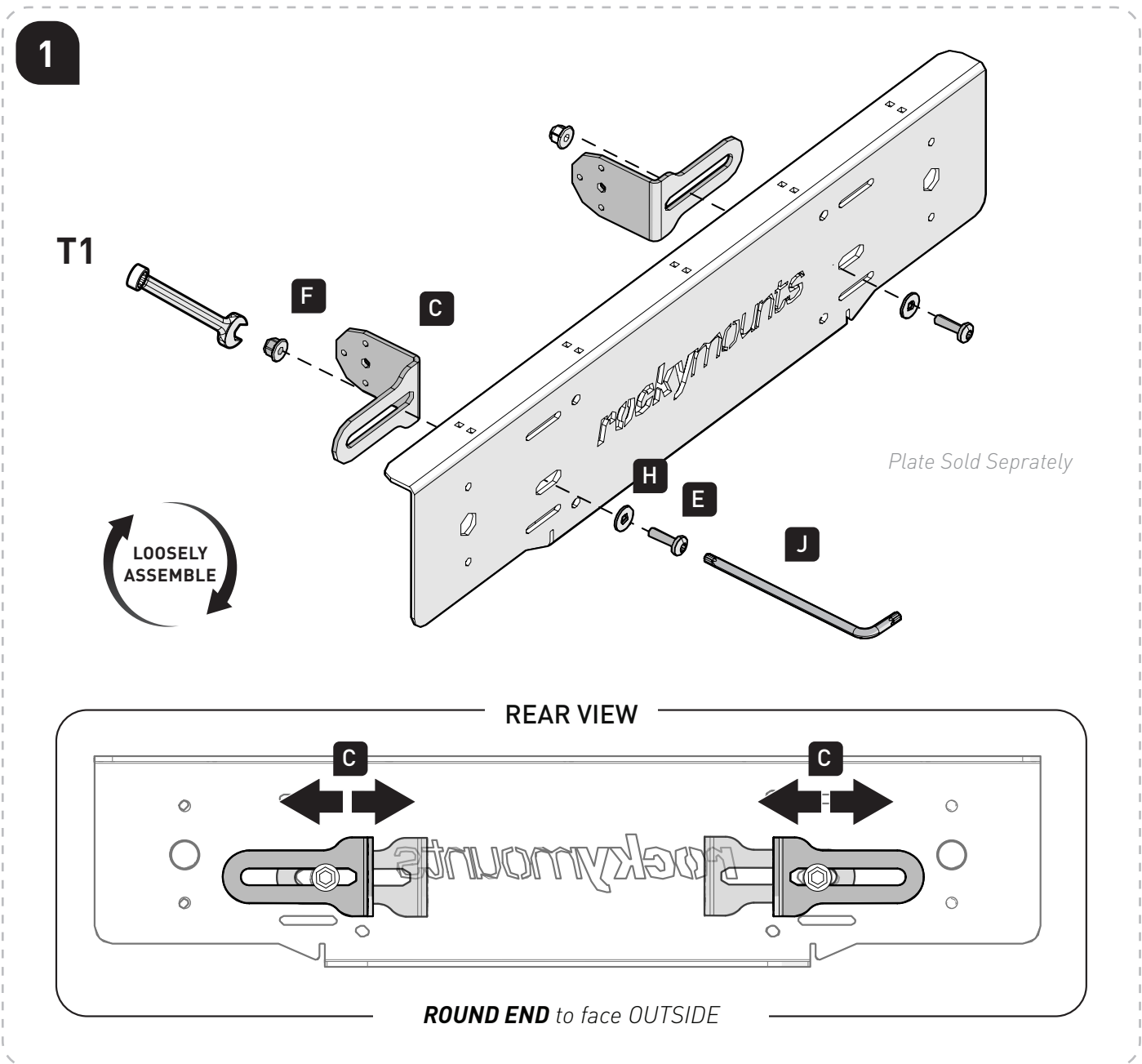
FOR GUIDERAIL (For HIGHNOON/MONORAIL, Skip to **Step 8**)

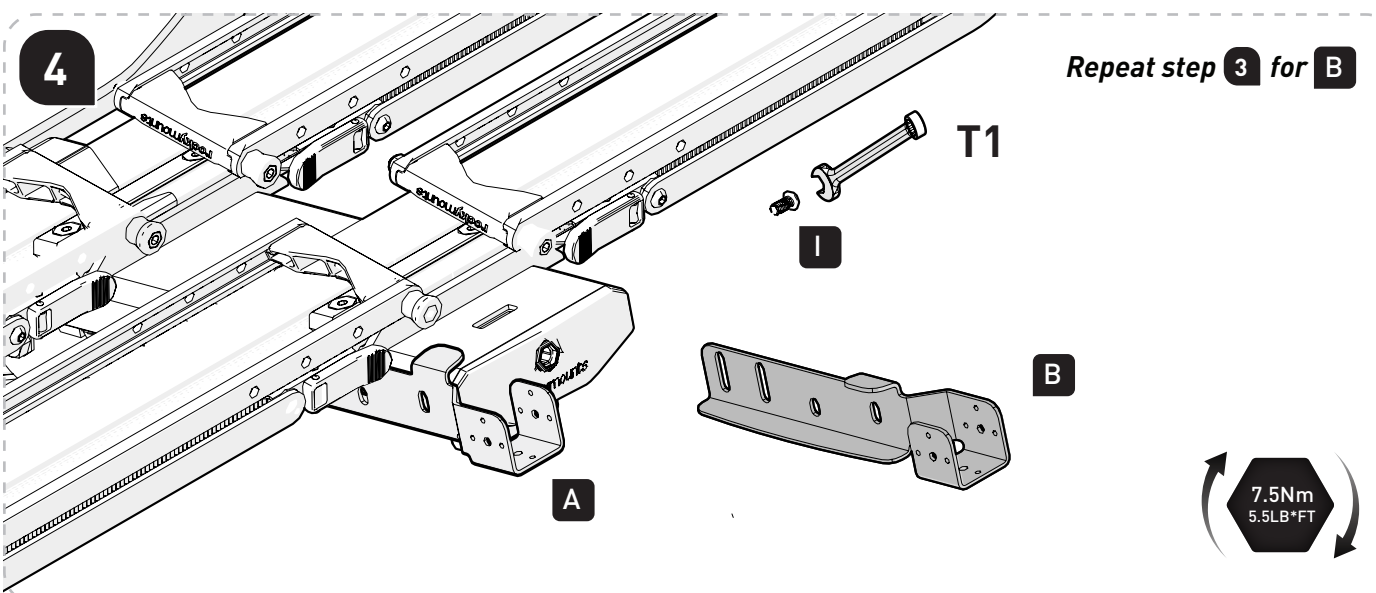
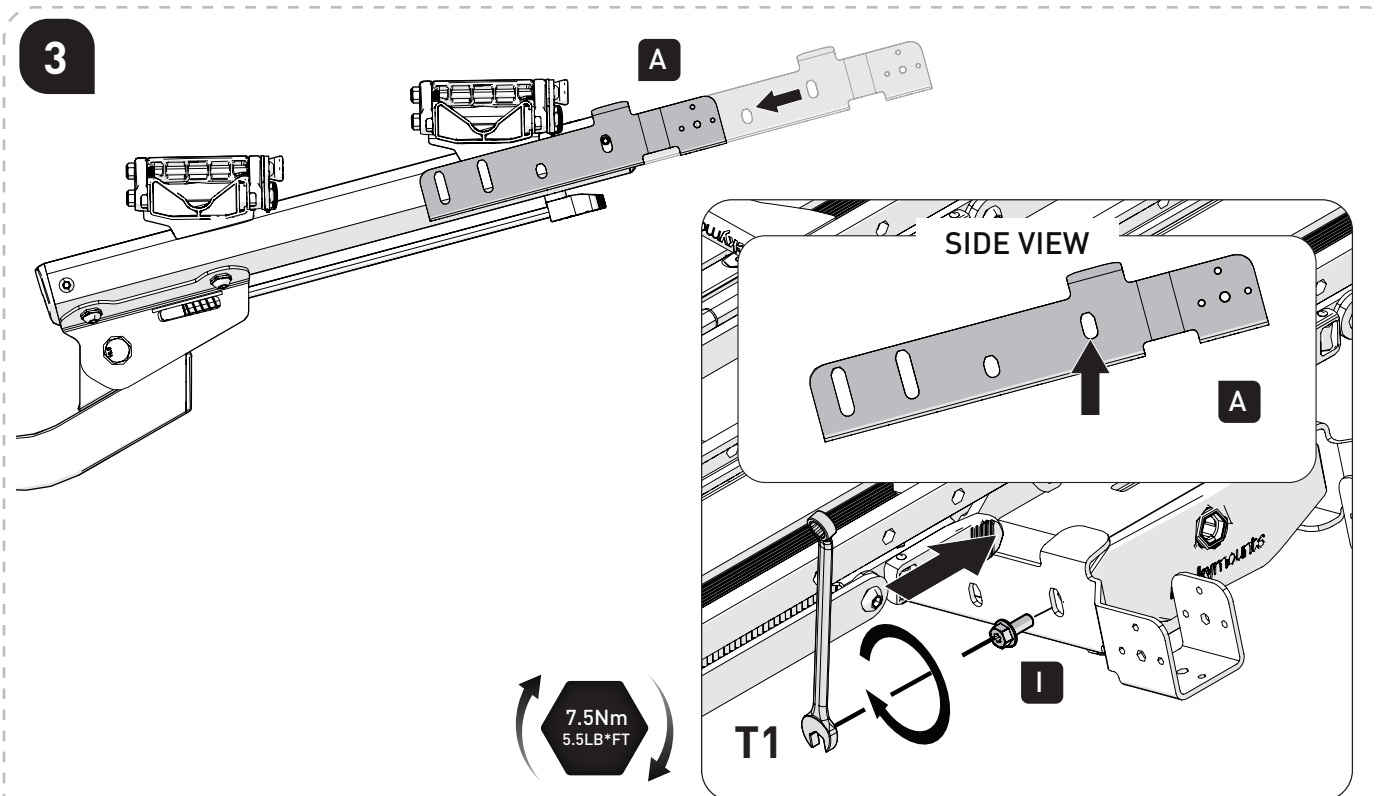
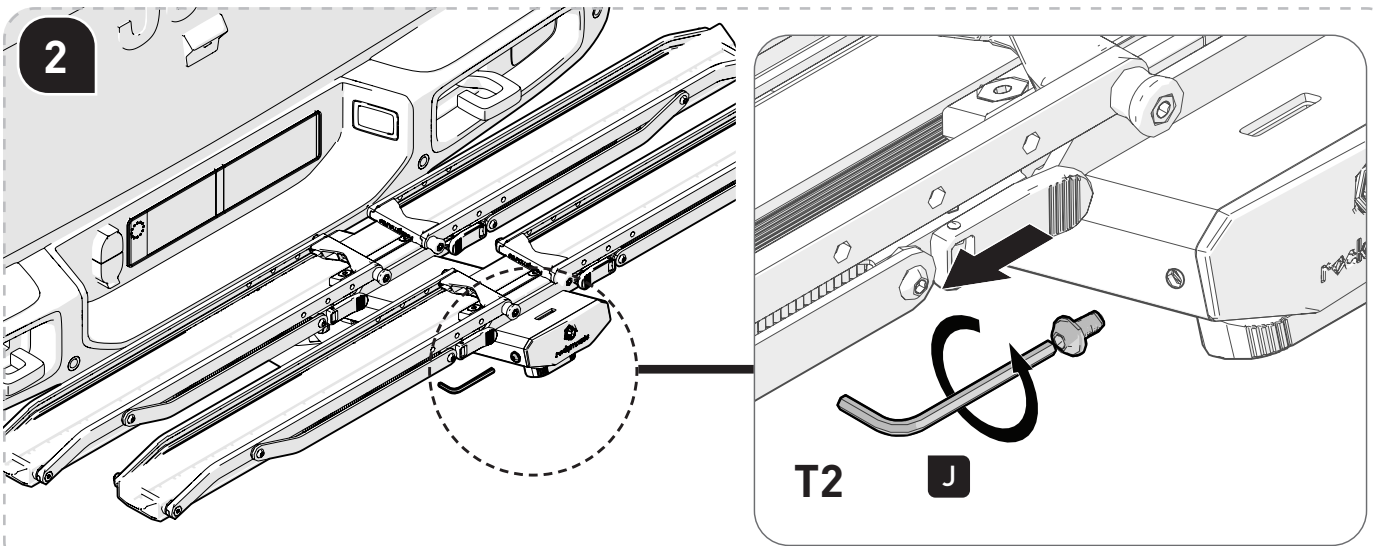


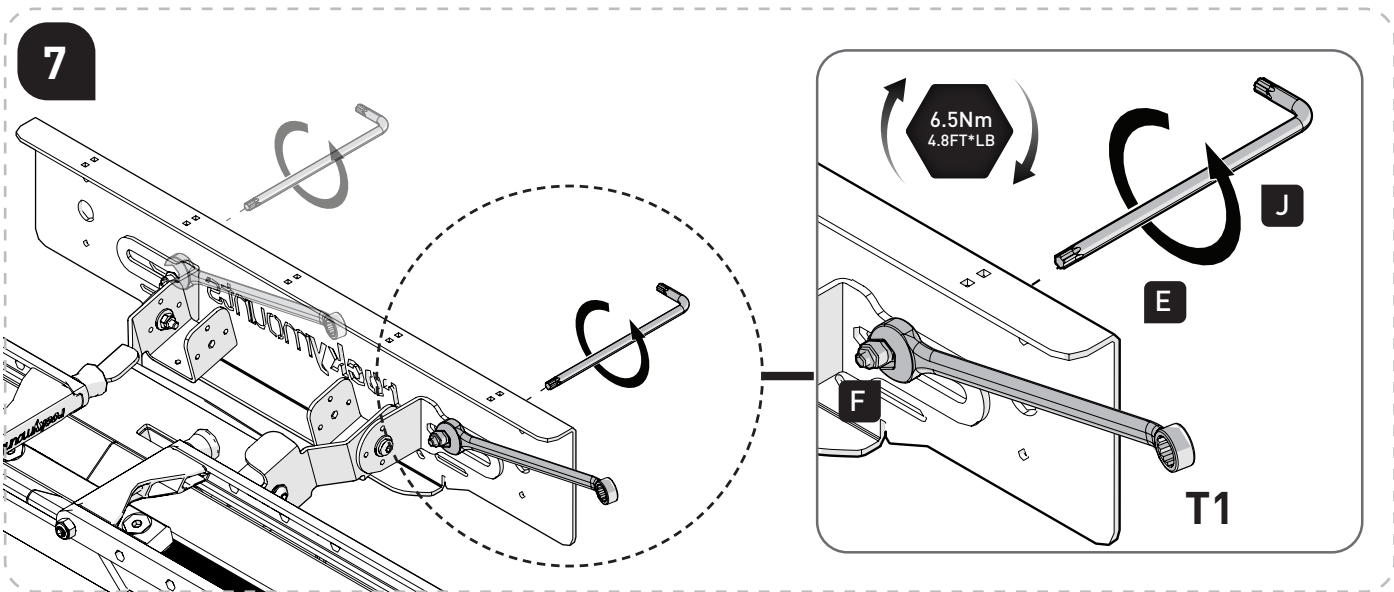
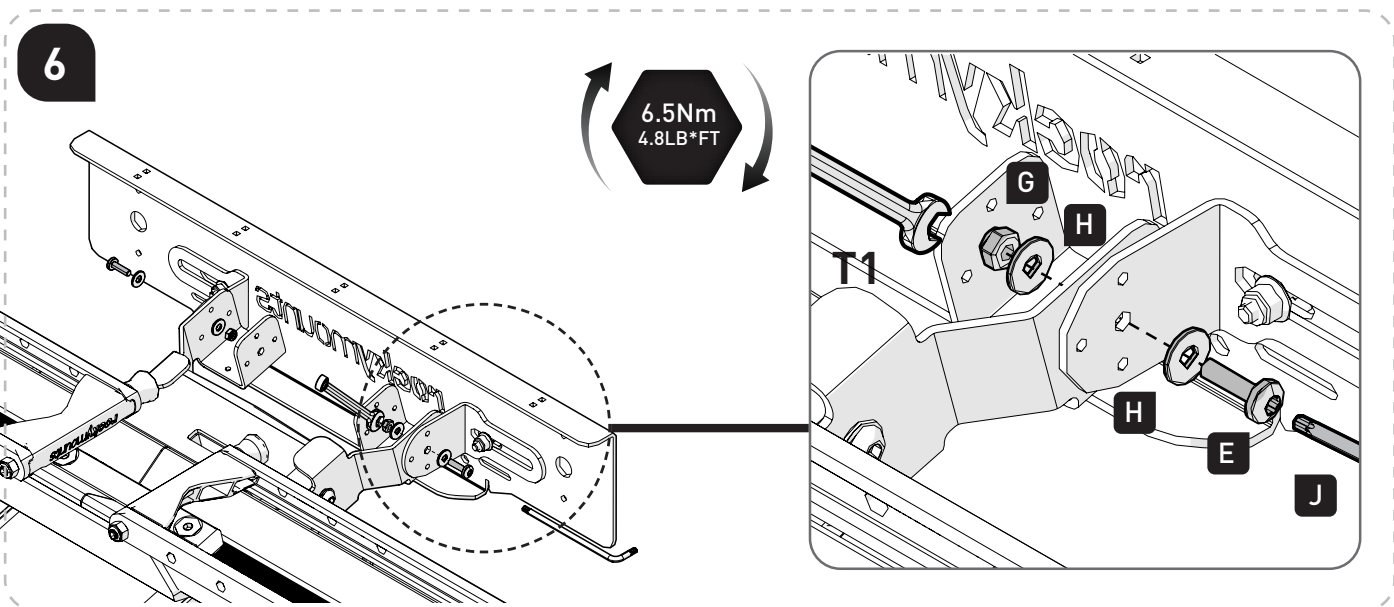
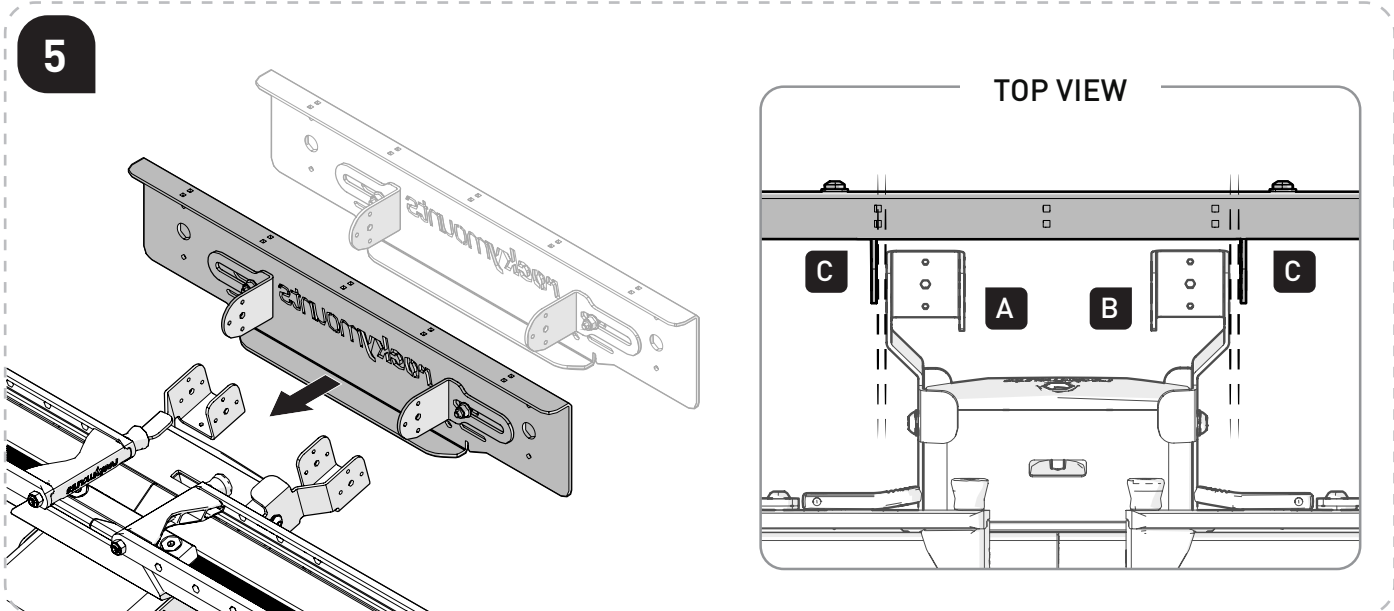
GUIDERAIL:

Steps **1** - **7** & **22** - **23**

51200.

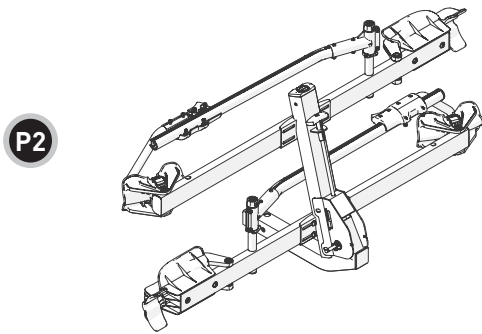






Fitment Complete. Skip to Step 22 for OPERATION steps.

FOR HIGHNOON / MONORAIL: (For GIGAWATT, Skip to **Step 15**)



HIGHNOON / MONORAIL:

Steps **8** - **14** & **22** - **23**.

51300 / 50430.

NOTE: Example depicts HIGHNOON, but steps also apply for MONORAIL.

8

T1

F

C

H

E

J

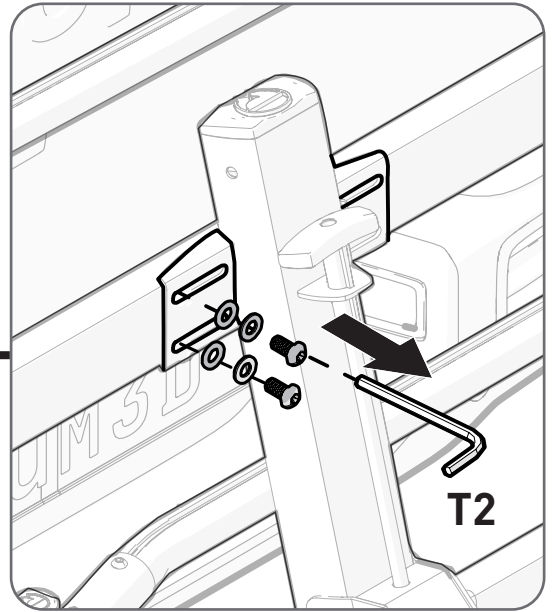
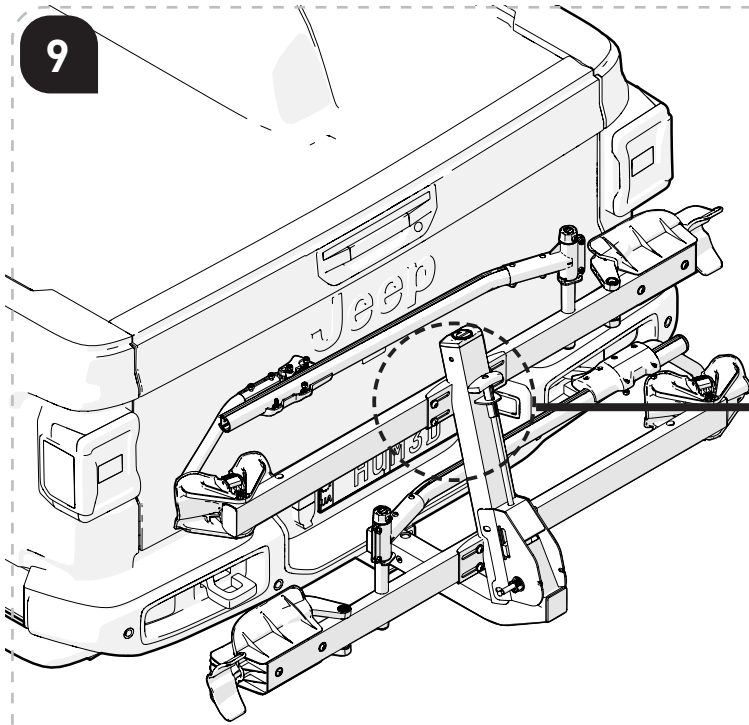
Plate Sold Separately

LOOSELY ASSEMBLE

REAR VIEW

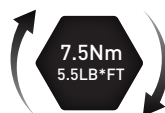
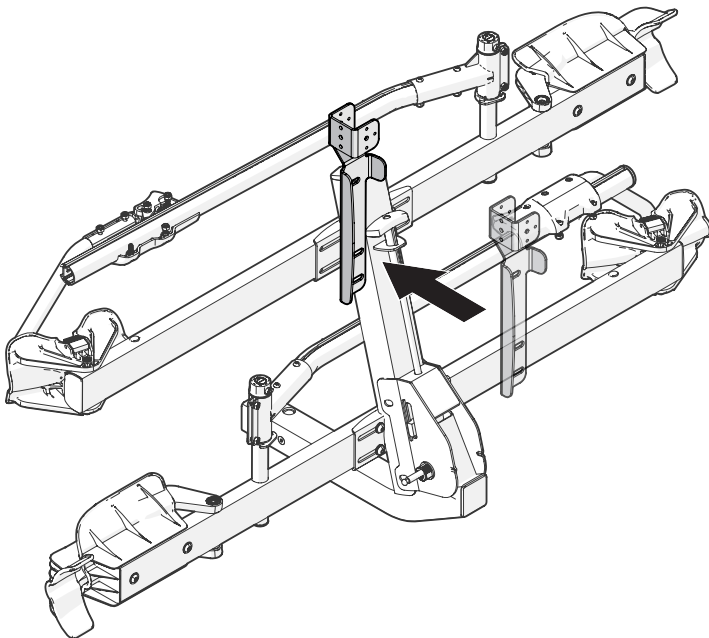
ROUND END to face **OUTSIDE**

9



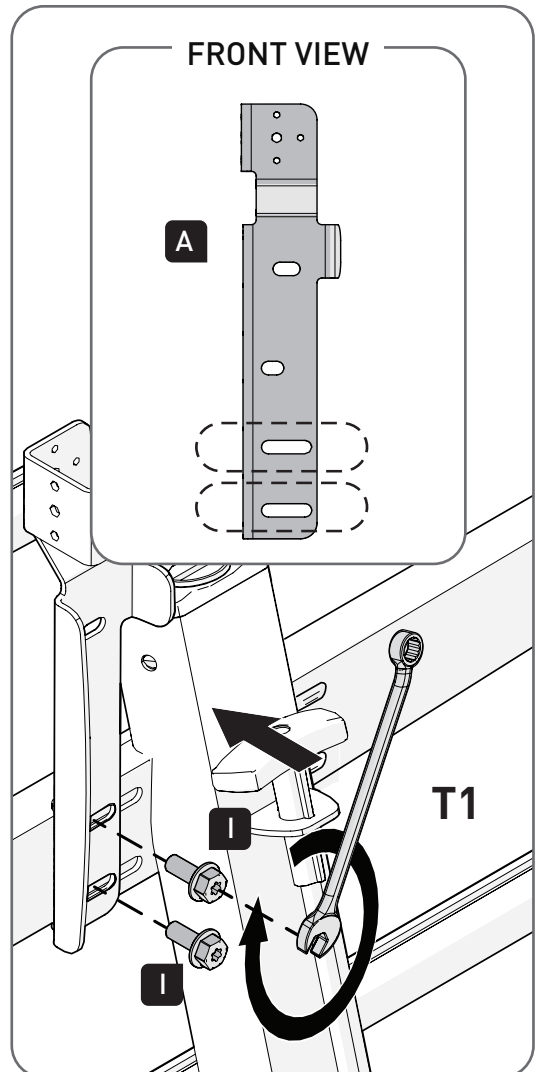
IMPORTANT: Remove hardware one side at a time to prevent removing components completely.

10

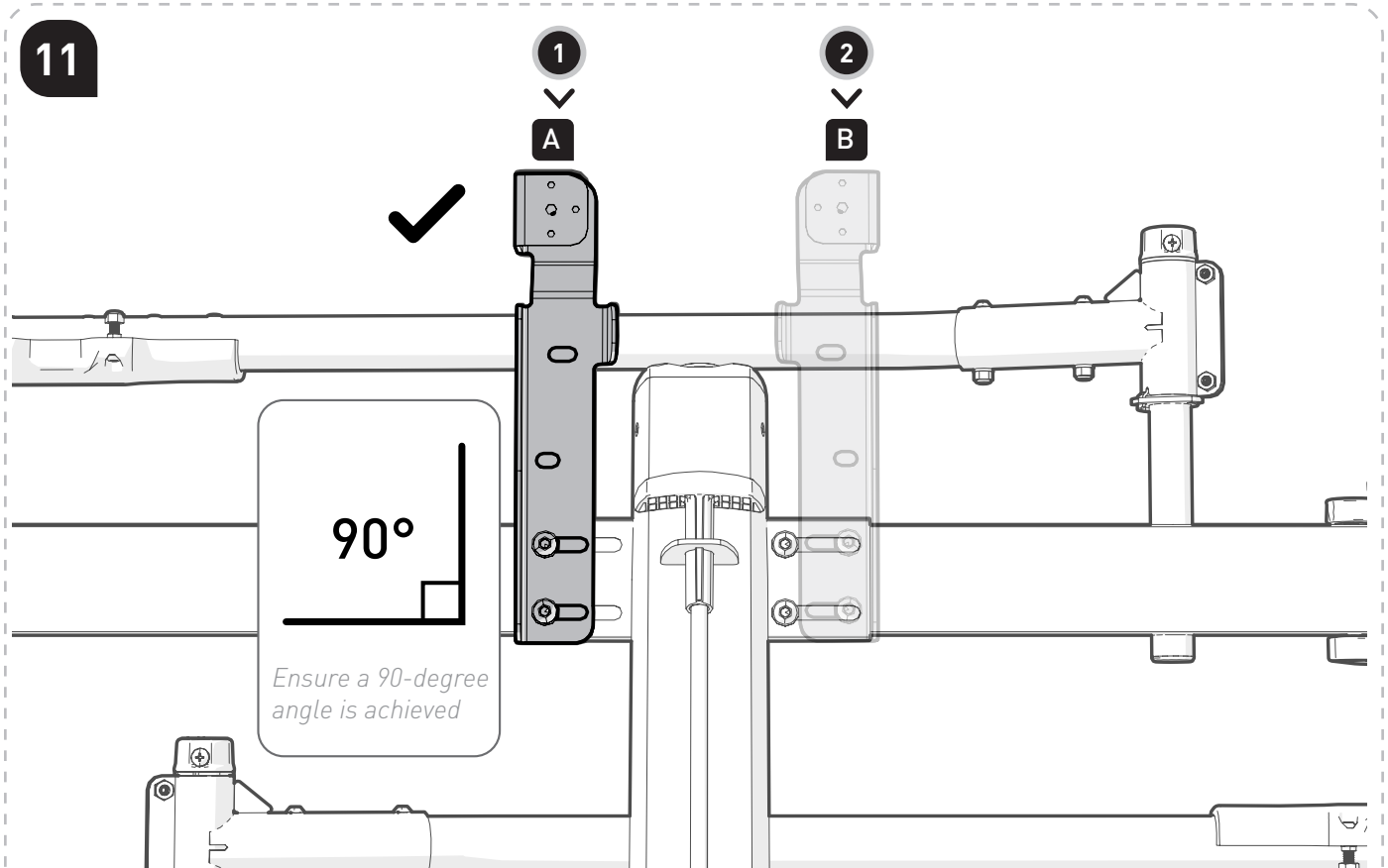


FRONT VIEW

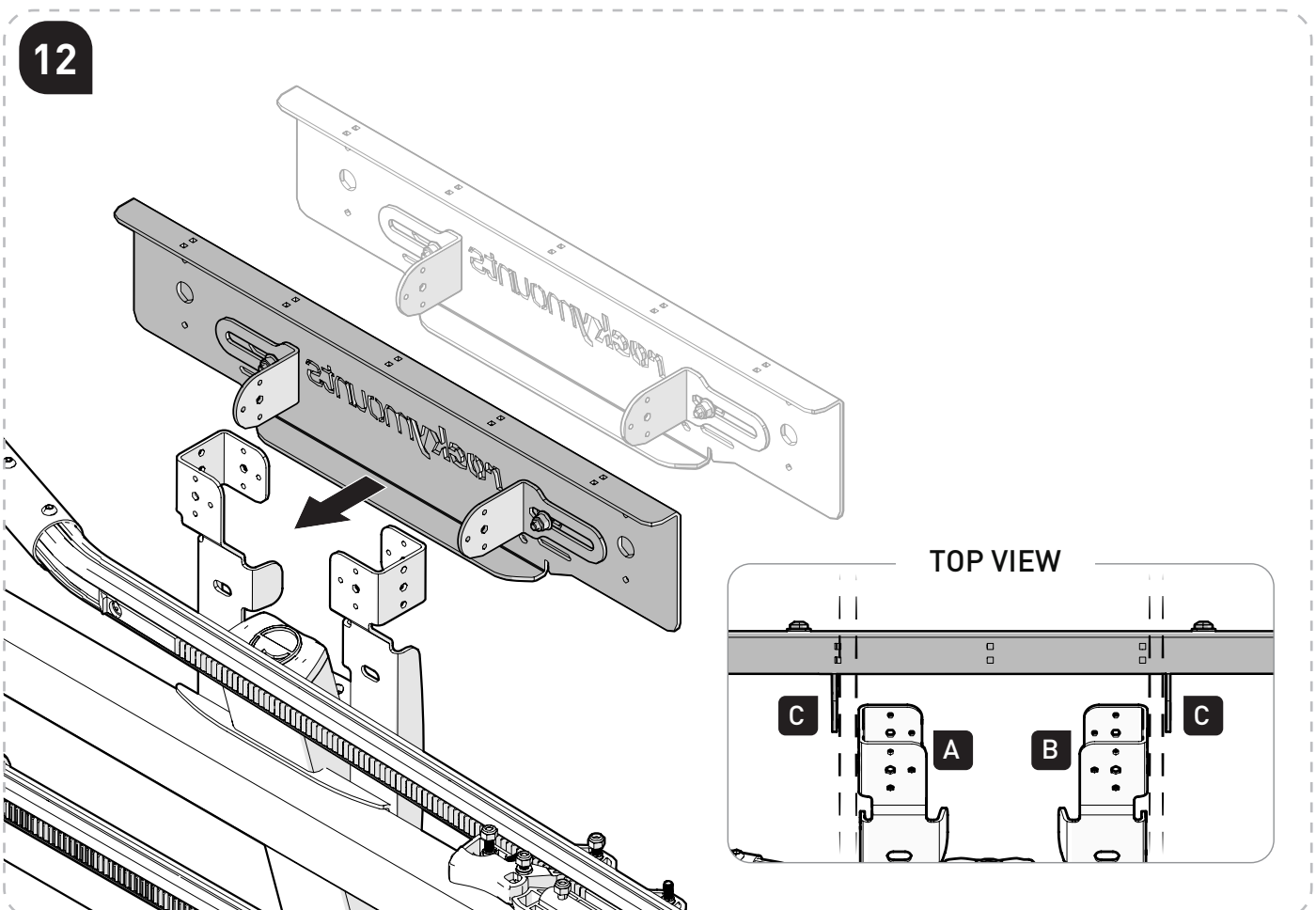
A



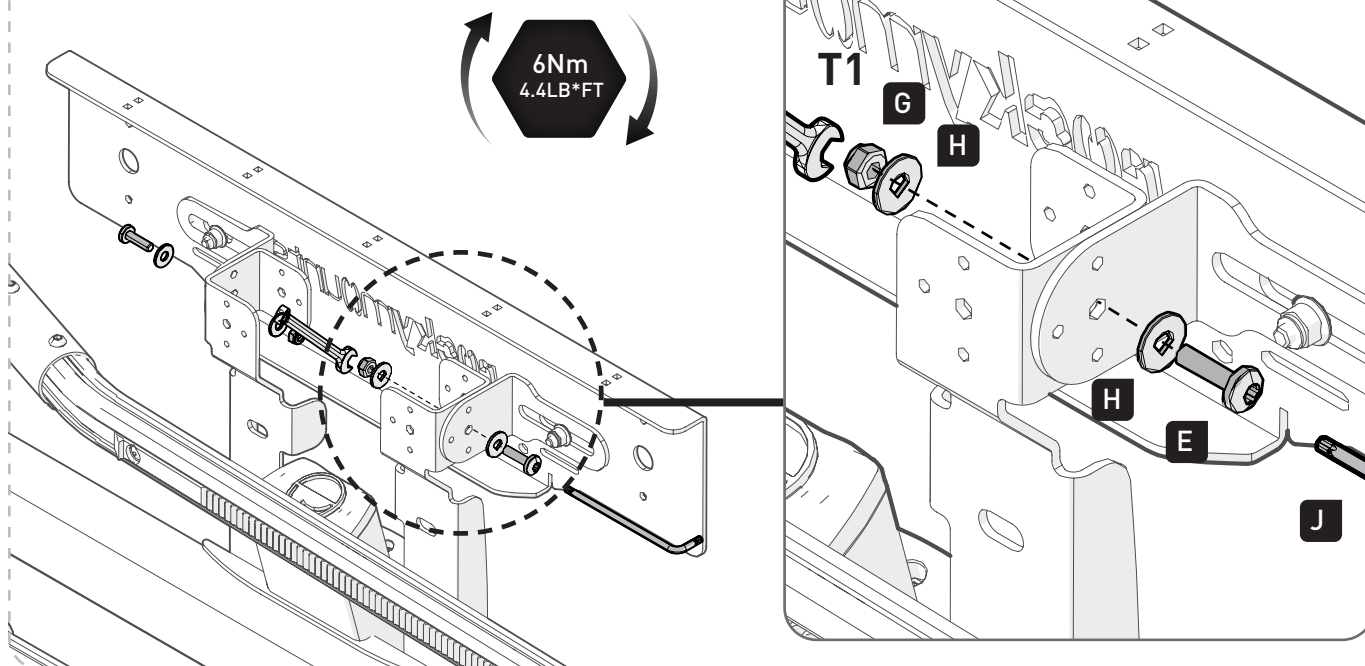
T1



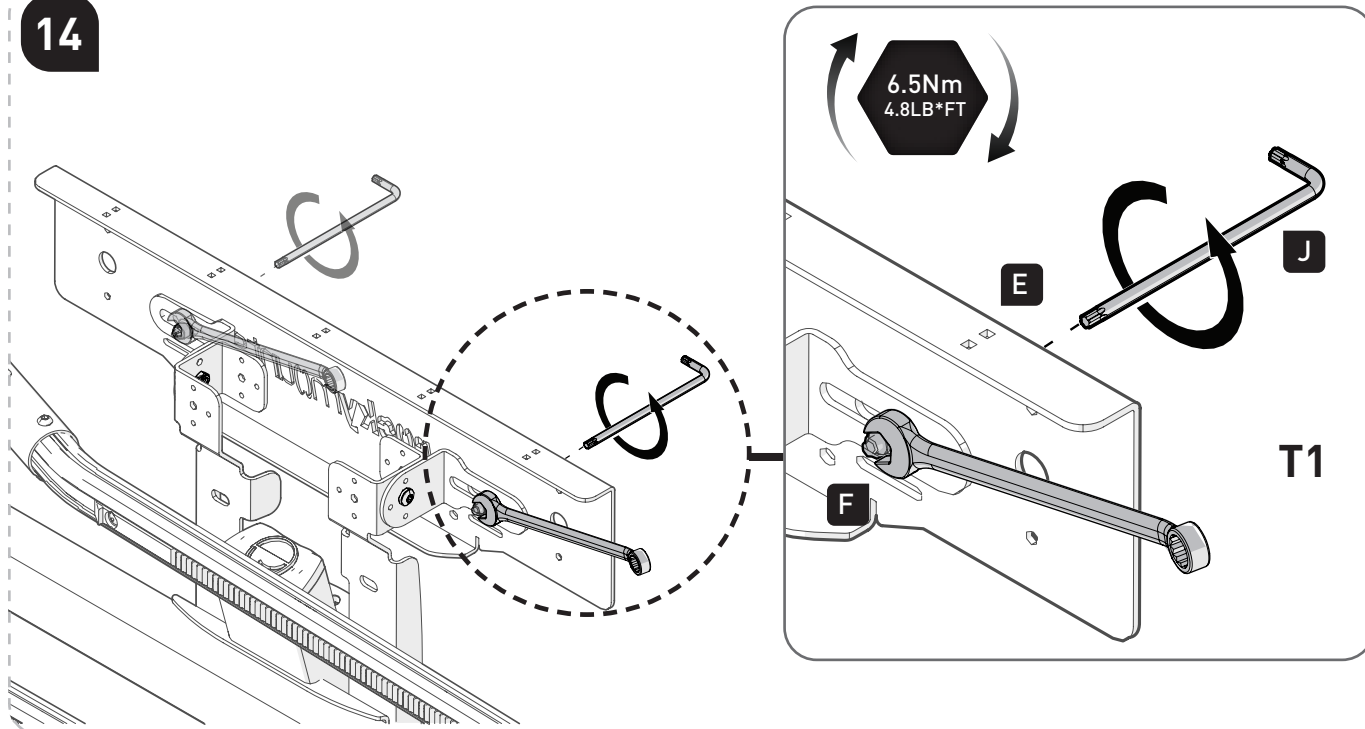
Complete Steps 9 - 10 on one side, then repeat the steps on the other side.
This prevents removing components completely.



13

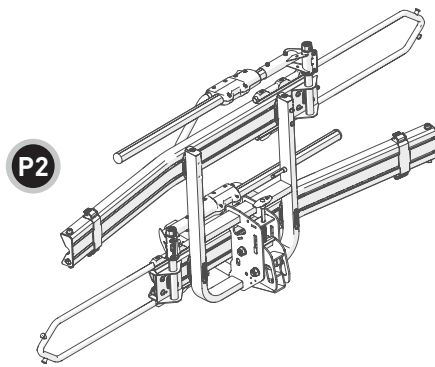


14



Fitment Complete. Skip to Step 22 for OPERATION steps.

FOR GIGAWATT (For OPERATION, Skip to **Step 22**)



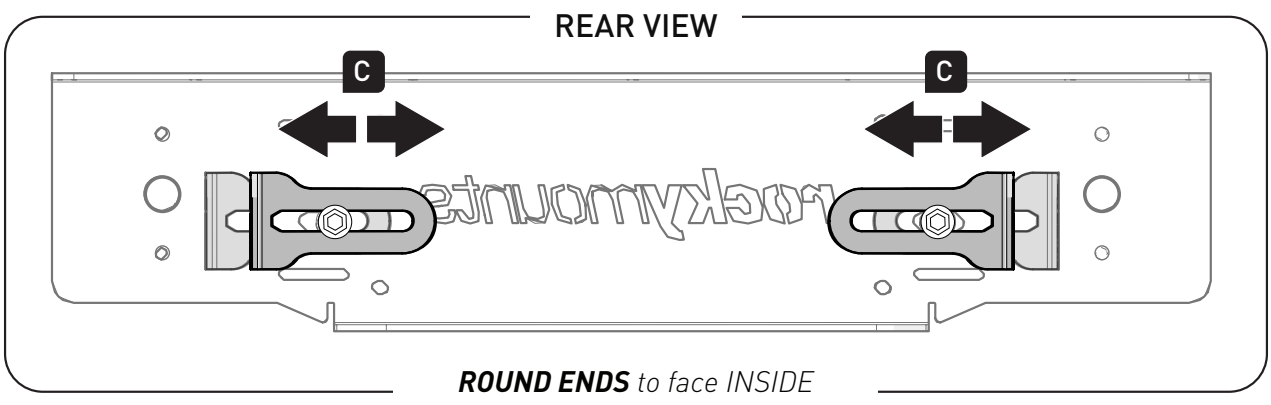
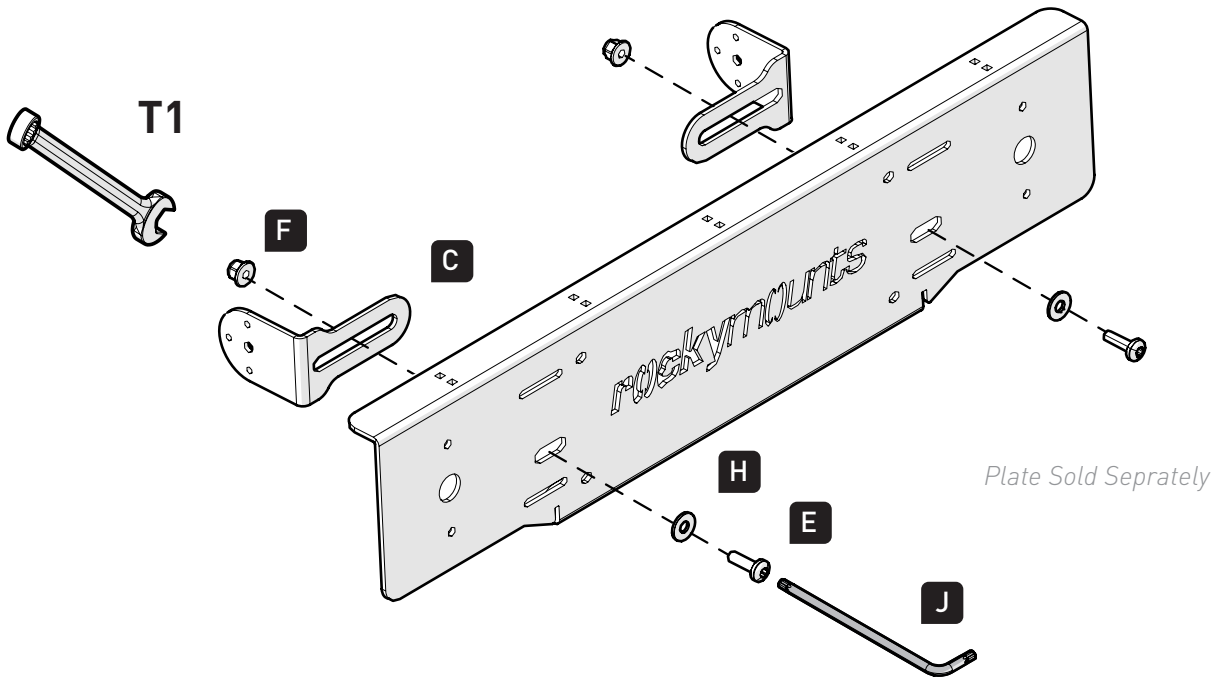
P2

GIGAWATT:

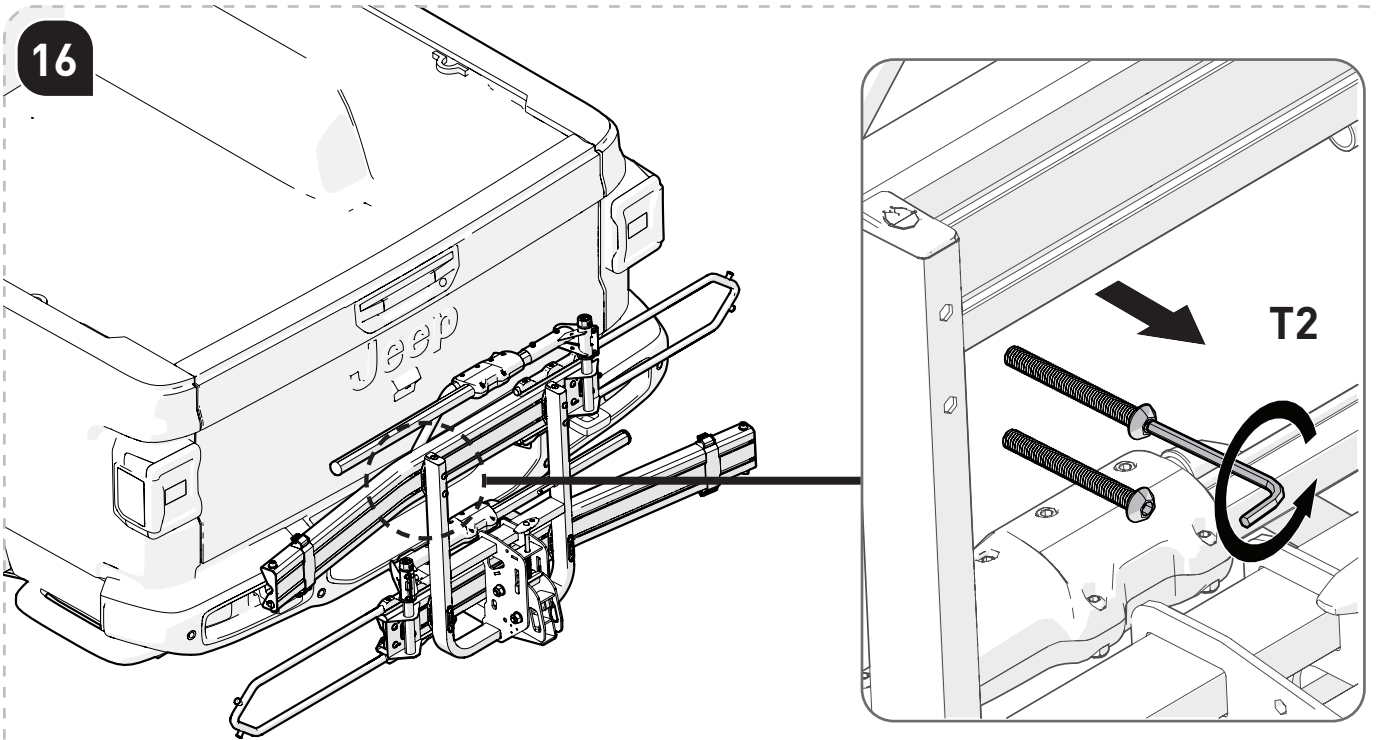
Steps **15** - **23**

51400

15

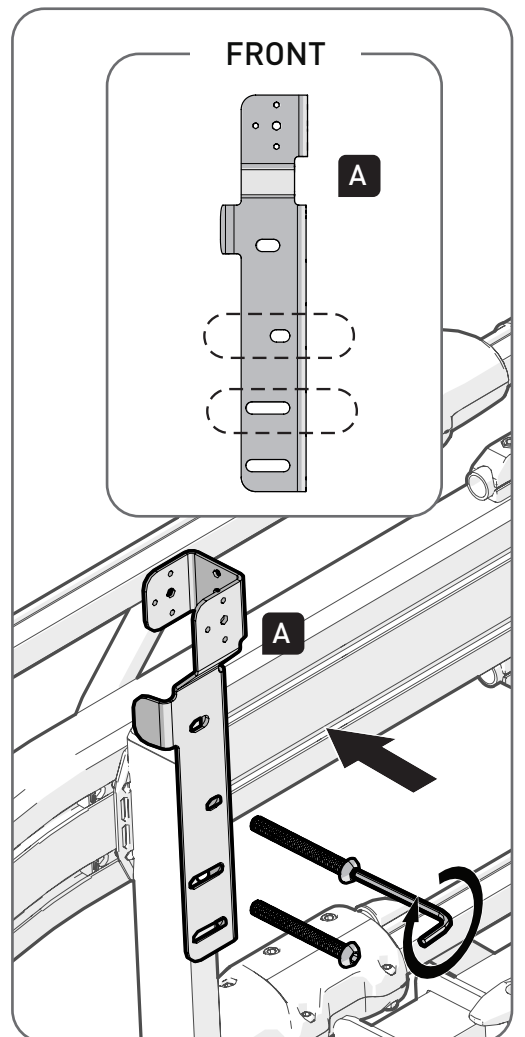
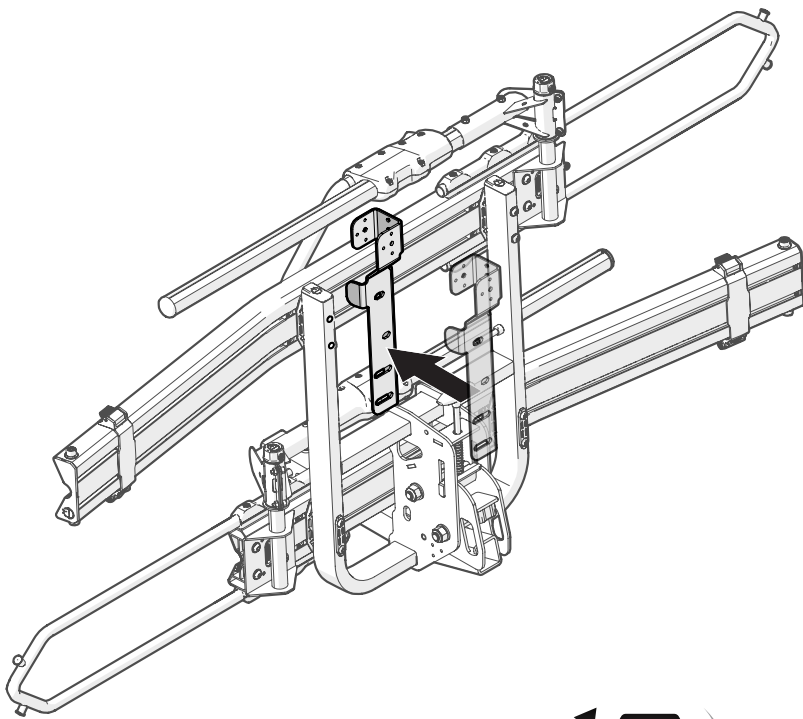


16



IMPORTANT: Remove hardware one side at a time to prevent removing components completely.

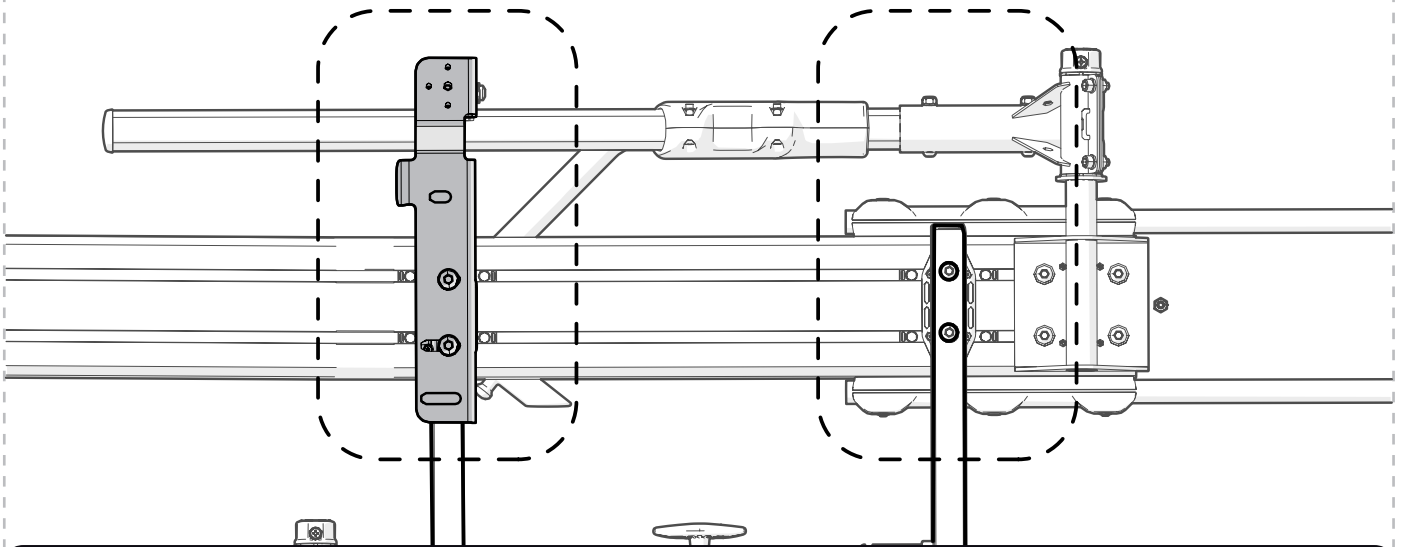
17



NOTE: Use existing M8 BOLTS that were removed in Step 16.

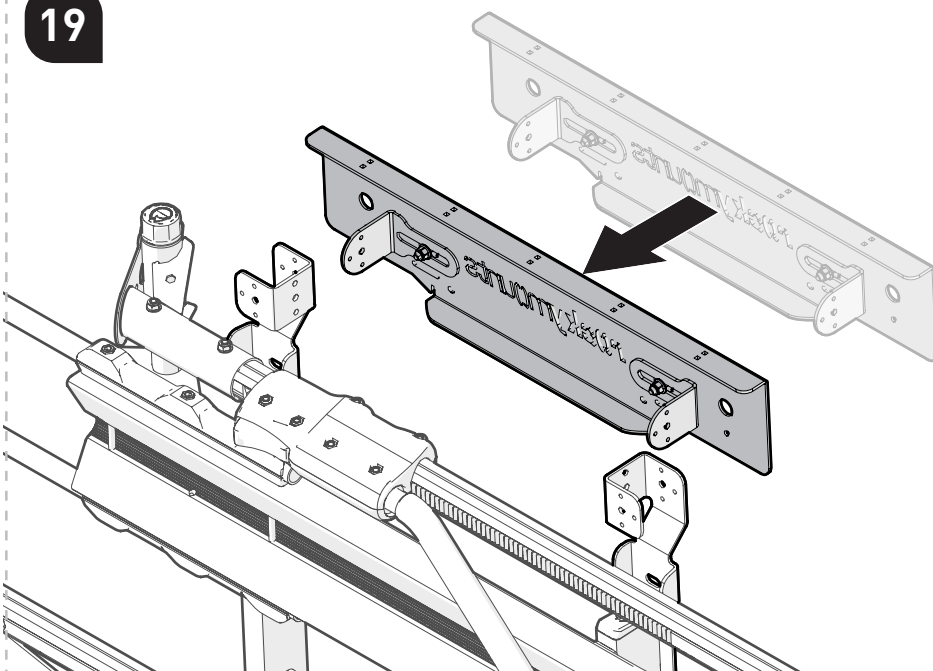


18

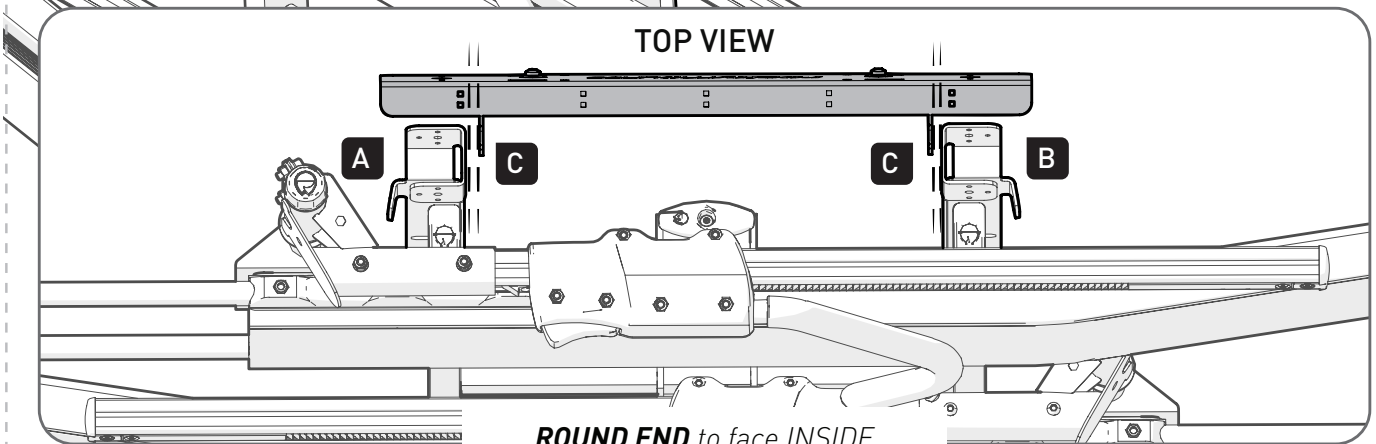
1
▼
A2
▼
B

Complete Steps 16 - 17 on one side, then repeat the steps on the other side.
This prevents removing components completely.

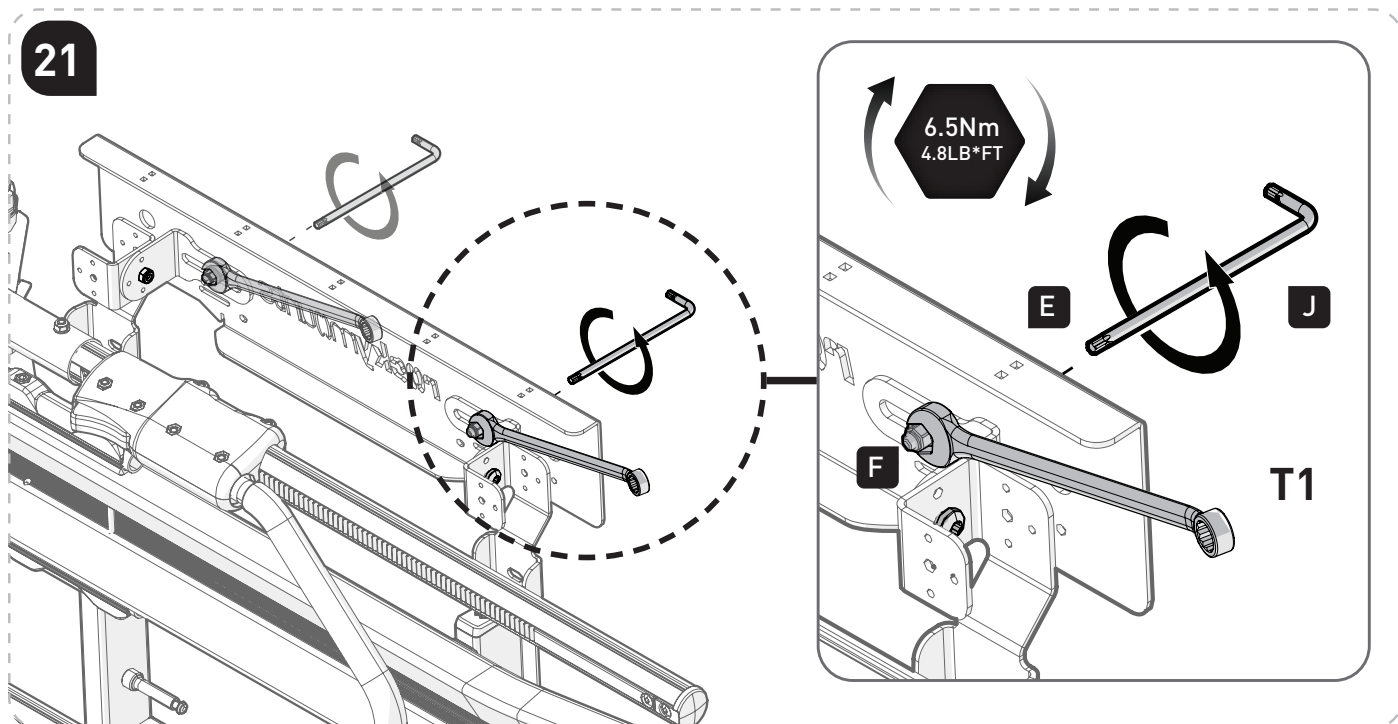
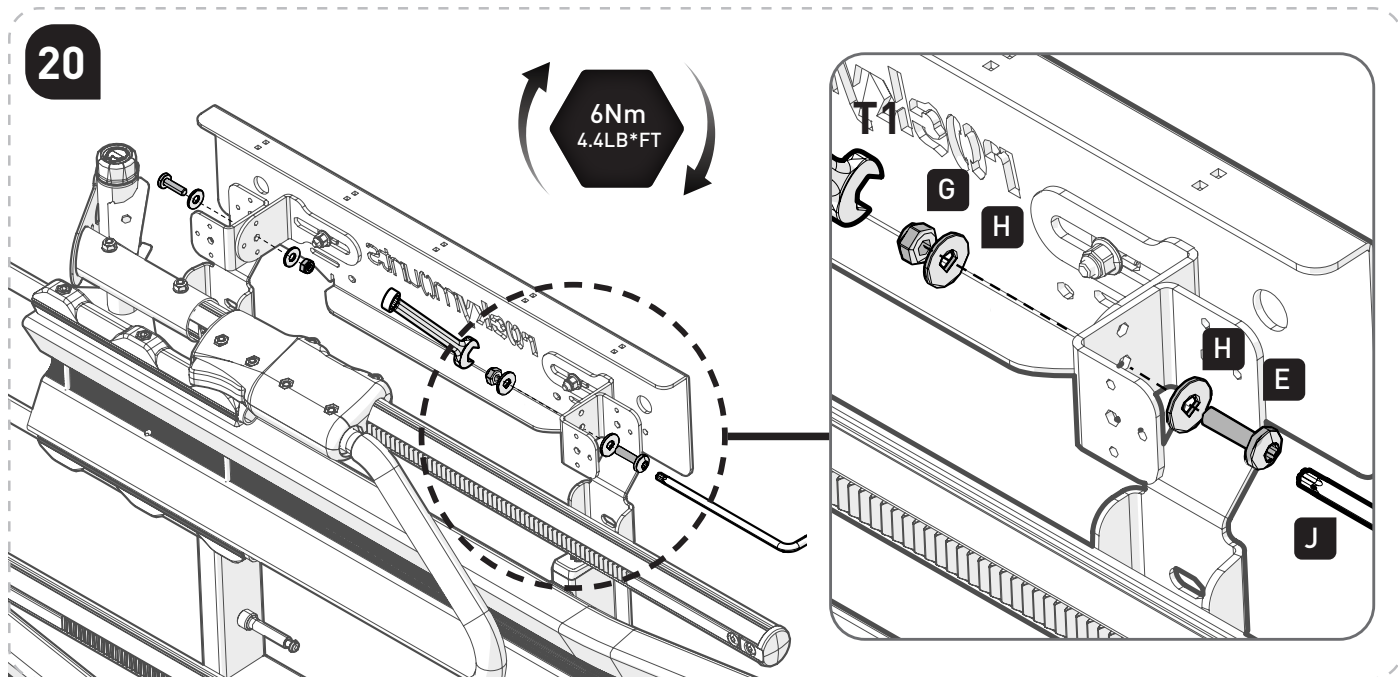
19



TOP VIEW



ROUND END to face **INSIDE**



Fitment Complete. Proceed to Step 22 for OPERATION steps.

OPERATION (Operation for **All Configurations**)

